

Nepal: Earthship #1



We're building an **earthquake resistant Earthship** for **young teachers** who will help take **life-improving** sustainable technologies to schools in some of the economically poorest **valleys of Nepal**.



Not only a home for teachers

Once qualified, teachers take their new knowledge of sustainable technologies to villages spread throughout the Makalu valley. They play a key organisational role in village life and are in an ideal position to affect change.

Nourishing with more than food

The Himalayan Education Centre (HEC) will incorporate permaculture projects. The building will even have food growing inside it. The growing season will be year round, providing space to experiment as well as nutrition.



Celebrating local culture

Earthships are indigenous to the world. They are built using reused materials and incorporate local techniques. This one will be no different. Local masons and carpenters will learn from Earthship Biotecture (EB) and pass on their knowledge.

Stopping the exodus to cities

Given the lack of opportunity in many of the remote villages in the Makalu valley, locals are increasingly having to look for work further afield. This project hopes to show people how they can stay with thier families while still providing for them.



Donate here: www.cuoreattivo.org

Volunteer and join us here: www.biotectureplanetearth.com/nepal



A People ready to thrive

16 young women will live in the **Himalayan Education Centre (HEC) Earthship**. In addition to teacher training, they will explore sustainable technologies that will **change lives**.



Quality of life

The offgrid philosophy is to increase quality of life in terms of resilience, security and liberty. To avoid fragility and dependence on economic and political systems that can change without notice.

An empowered, resilient community

By sharing simple and relatively inexpensive technologies, an entire community can benefit. Offgrid systems keep on providing. Low maintenance costs and inexistent bills provide security over the long term.



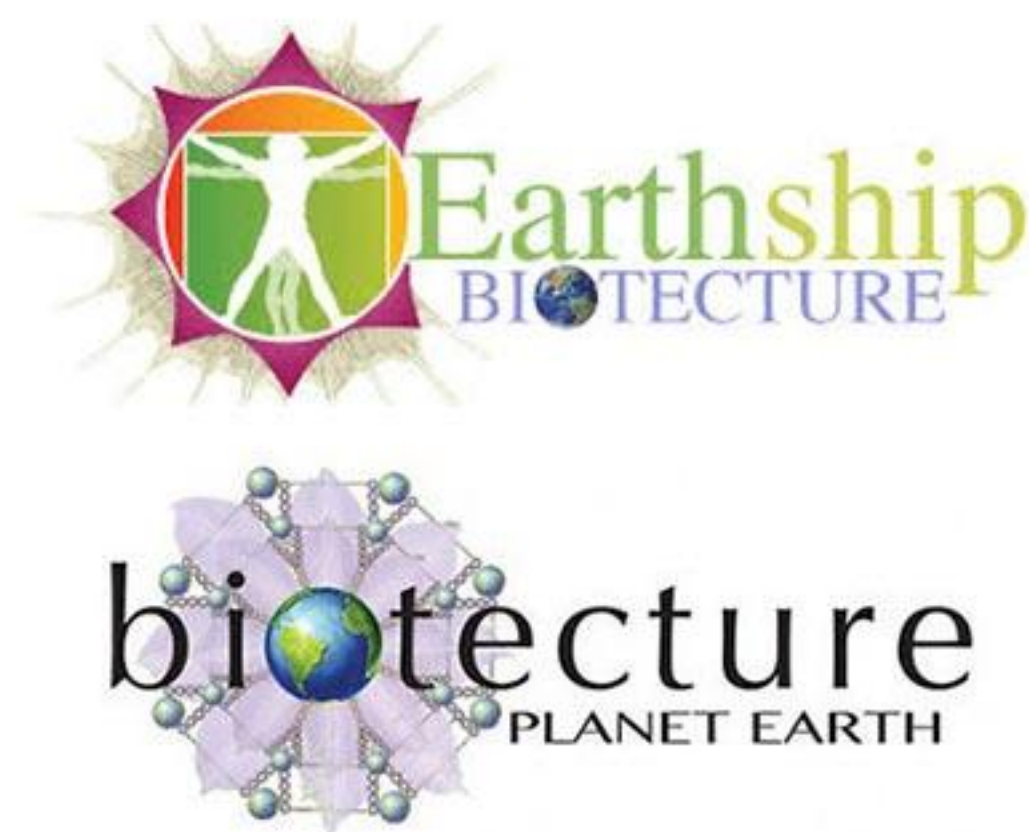
Education as a way of life

Creating an offgrid home for student teachers has scaleable benefits. They teachers will pass on their knowledge to generations of children in some of the most remote villages in Nepal.



Donate here: www.cuoreattivo.org

Volunteer and join us here: www.biotectureplanetearth.com/nepal



A girl with a dream

From cowshed to school

Sunita Gurung was born in April 1988 in the small village of Lingam, near the Tibet border. Everyday she would walk the 3 hours to school and back each day as though her life depended on it. In many ways it did.

One day when she was 13, just after being told she must give up her studies and dedicate her time to the family and the farm she got a lucky break. She was selected for the Education Centre hostel.

From student to teacher

After graduating Sunita started to help the coordinator but the economic situation was dire. There was no money for tuition fees, food, school supplies, uniforms or rent. All the students had to leave the hostel; the goals, aims and promises were crumbling. Sunita speaks of that time, "I convinced my friends and inwardly promised myself saying 'I will do something for girls and for the village.' But without help this was impossible."

They sent a proposal to the Educate The Children organisation and funding started to arrive. In 2008 Sunita made contact Ten Friends but she still couldn't speak English. Six months later she was able to read her first English book: *Three cups of tea*. The idea to start a library was born. It was to be the first of thirty two... and counting!

From teacher to community leader

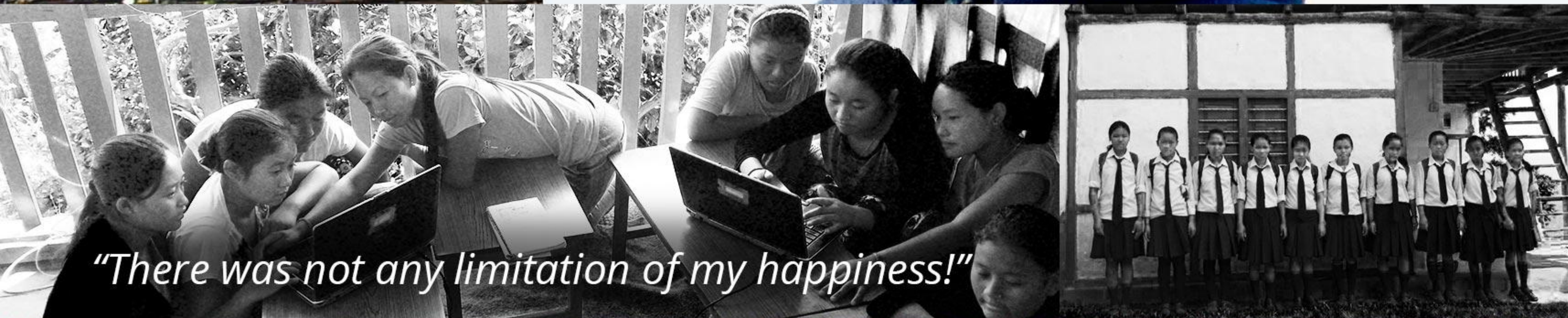
Now 9 years later Sunita is leader of the Himalaya Education Center (HEC) and teaching 11 students. Sixteen students are teaching in their own village after finishing their studies and the snowball is beginning to roll.

The new HEC building will build on Sunita's story to help other young women take life-changing technologies to their villages so that other children can be given the same opportunity.

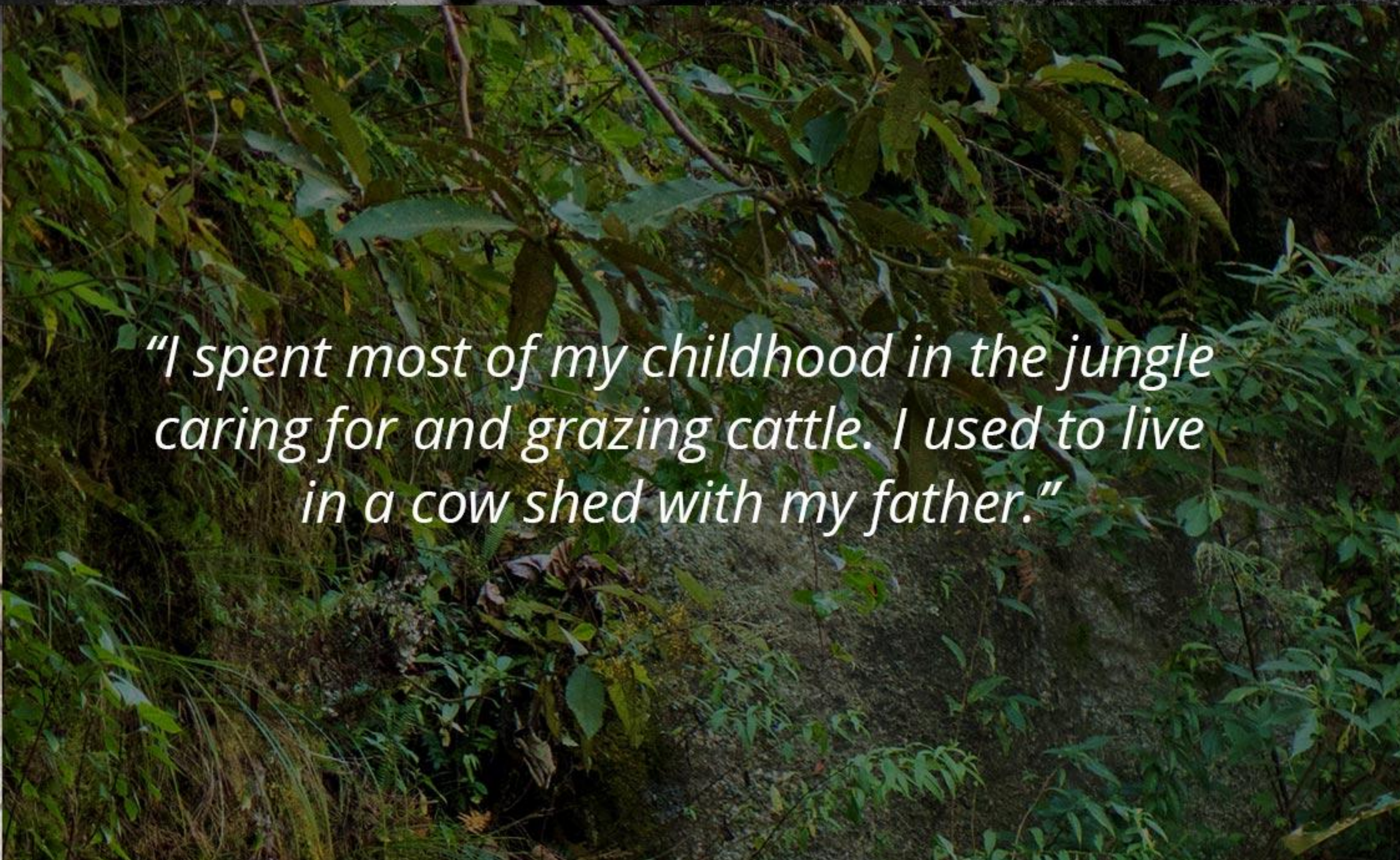
We need your help to keep dreaming!

Donate here: www.cuoreattivo.org

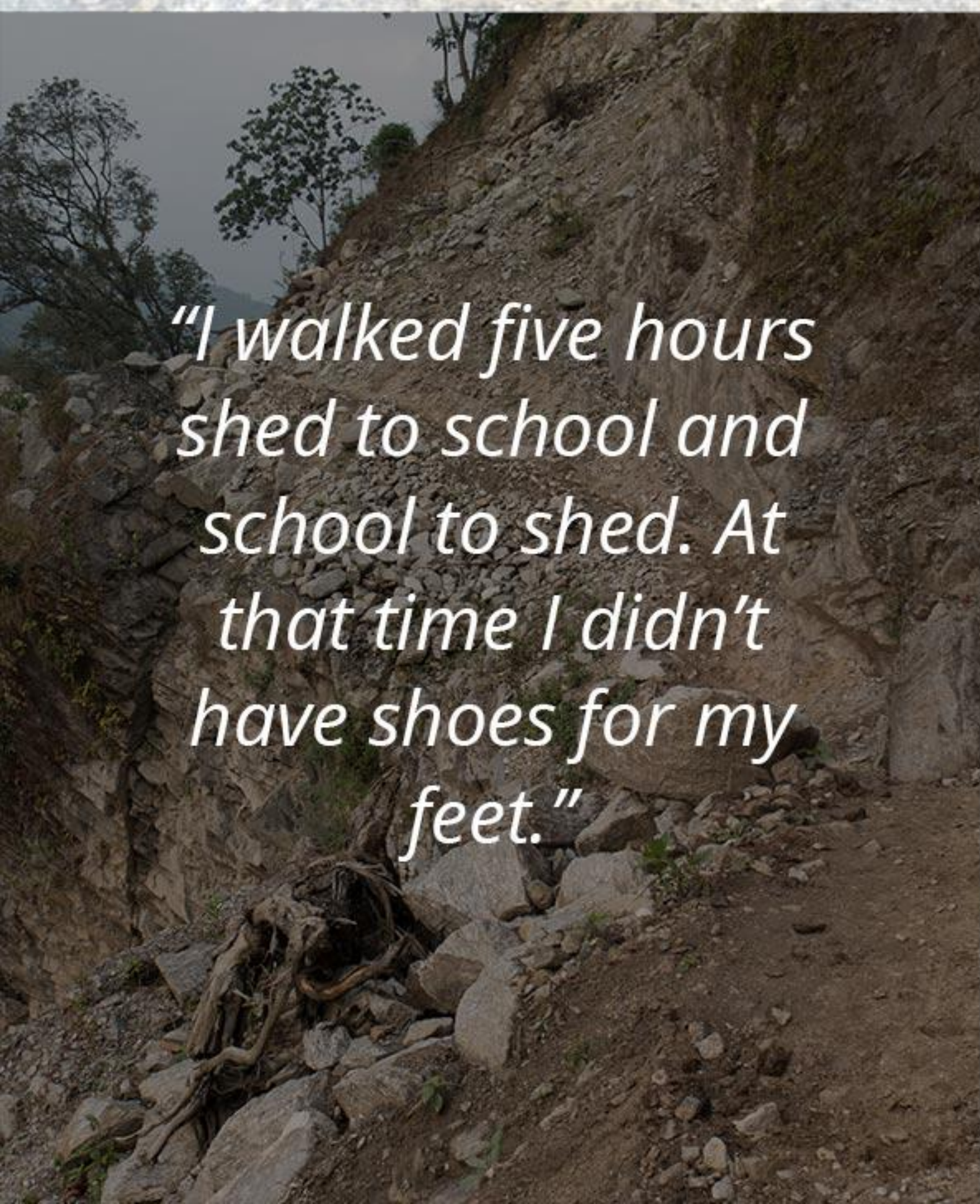
Volunteer and join us here: www.biotectureplanetearth.com/nepal



"There was not any limitation of my happiness!"

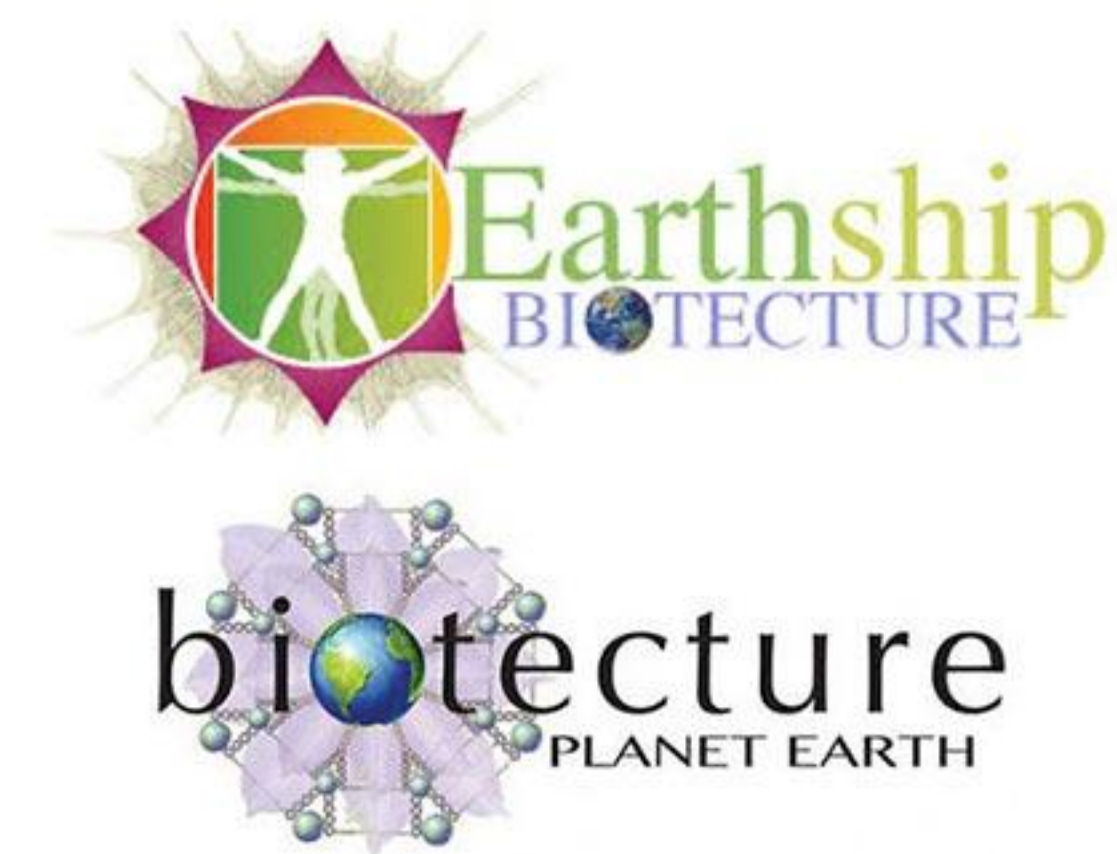


"I spent most of my childhood in the jungle caring for and grazing cattle. I used to live in a cow shed with my father."



"I walked five hours shed to school and school to shed. At that time I didn't have shoes for my feet."





A diverse team

Seppi



Giuseppe, known to everyone as Seppi, was born in 1955 in Alagna Valsesia, in Italy. He followed family tradition and at 18 years old became an Alpine Guide. In 1991 he was called to participate in the Venezia-Pechino expedition to climb Shisha Pangma (8027m) the world's 14th highest mountain.

His Himalayan adventure was underway. In the following years he assisted successful expeditions to many of the most important 8000m peaks. These trips lead him to being asked to participate in the construction and management of the International Pyramid Observatory in the Khumbu region. It was here that he started his volunteer work which quickly became his true passion. From then on he dedicated time each year to building schools and other projects with the local population.

The team



Patrick Lunt

Patrick built with EB in Malawi in 2013 and attended their Academy the following year. In 2015 he co-founded Offgrid Italia and lead an Earthbag build in Burkina Faso the following summer. He is focused on refugee and humanitarian projects using offgrid methods to increase freedom.



Shanti Petschel

Shanti works as an Aquatic Bodywork trainer, a coach for Resilience-Build-Up and Potentiality Empowerment. Some years ago he activated integrative Perma-Culture and Sustainability Enhancement Technologies in the CCI programs. Together with his son Daniel and Seppi, Shanti developed the idea to build the first Nepalese Earthship.

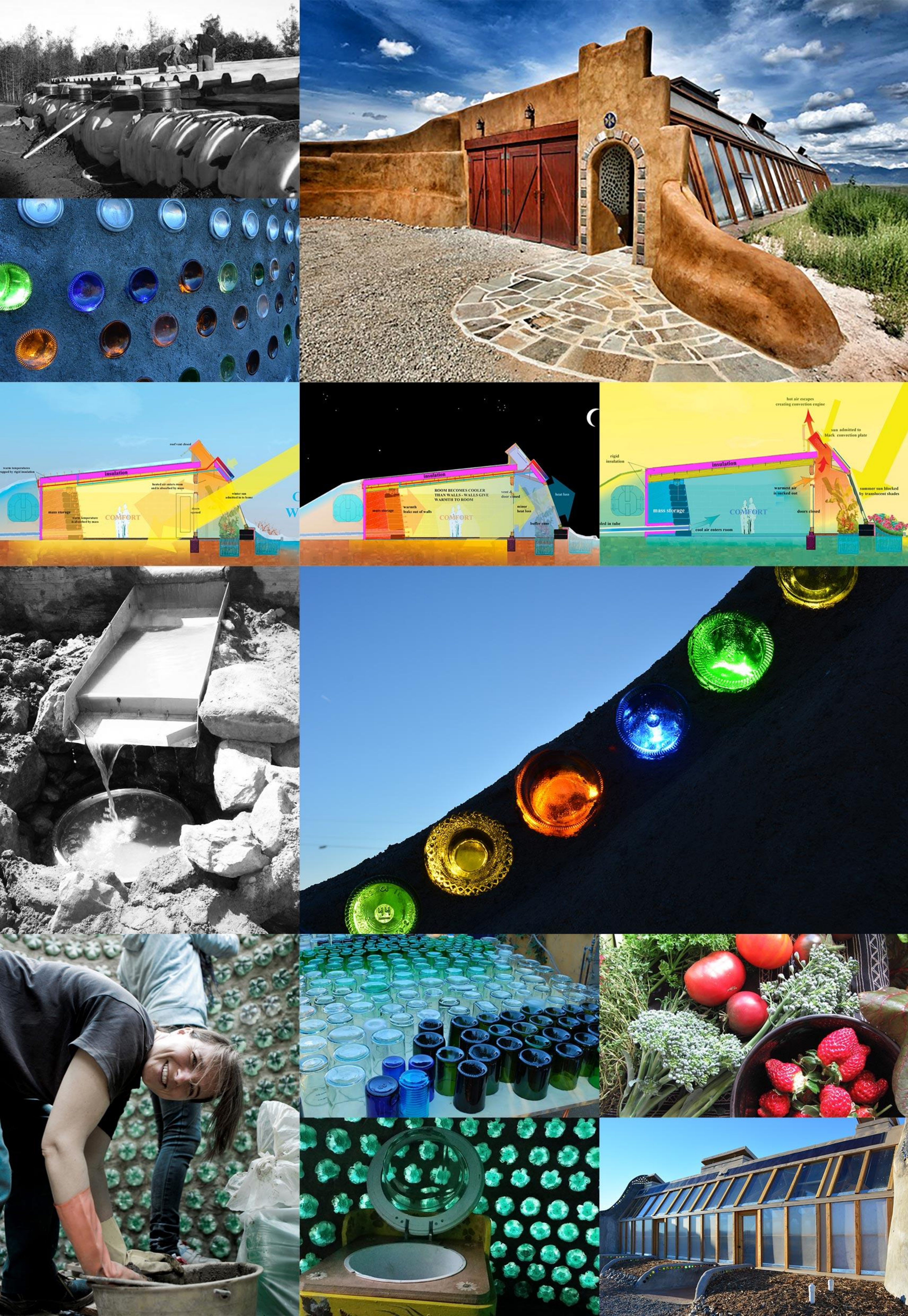


Martin Funk

Martin is an electric engineer. For 20 years he has worked with photovoltaic systems, small scale biogas and other sustainable energy, teaching and supporting sustainable communities in Colombia and Kenya. The small scale biogas provides energy for cooking and fertiliser from organic wastes, saves trees and helps to grow good food.

Donate here: www.cuoreattivo.org

Volunteer and join us here: www.biotechtureplanetearth.com/nepal



The Earthship



1. Collects water



2. Grows food



3. Treats sewage



4. Generates power



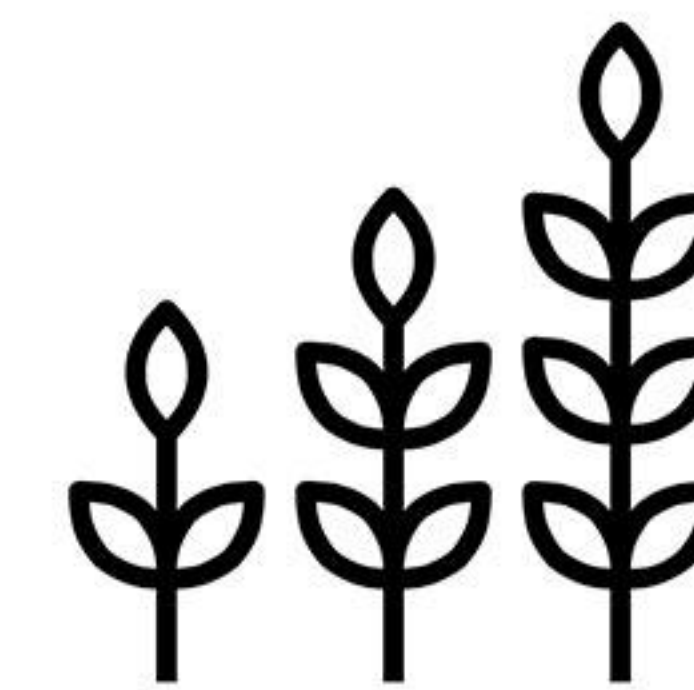
5. Self-heats and cools



6. Re-uses materials



7. Generates cooking gas



Scalability

The knowledge of offgrid techniques will be passed on to generations of children and local teams of masons and carpenters. Low maintenance costs will allow funds to be directed to constructing a building each year.

Earthquake resistant

Nepal is an earthquake risk zone. The Earthship design will ensure that the HEC is resistant to earthquakes.



Longterm vision

Seppi has been building schools for 20 years and the team is getting stronger. We've got no intention of stopping now!

Get in touch to help!

Join the team and learn how to build:

www.biotectureplanetearth.com/nepal

Donate to help us do more:

www.cuoreattivo.org

Partners

Build partners



Biotecture Planet Earth

Biotecture Planet Earth is a registered non-profit organization formed with the goal of expanding the use of affordable, resilient and sustainable buildings around the world while educating the public about the architecture, construction and functionality of these buildings.

Earthship Biotecture

Earthship Biotecture is an organization based in Taos, New Mexico that works globally and that has been building self-sustainable houses all over the world for the last 45 years with the aim of providing structural and reliable shelter to every inhabitant on planet Earth. The company is led by Michael Reynolds, the principal 'biotect' and creator of the Earthship movement, and has a vast following of hundreds of thousands of people internationally that want to learn the Earthship concepts.



Cuore Attivo

Cuore Attivo was born in 2015 in Armeno as several people joined together to put in to practice the idea of helping the neighbours in difficulty in Italy and abroad. The association has imposed this motto as a general rule for all its projects: do a lot with little.



Special Mention

Creavista

CreaVista's Shanti Petschel and Daniel Petschel introduced the Earthship concept and played a catalytic role in getting this project started.



Strategic Financial Partners

Ten Friends

Ten Friends is a non-profit based in Sisters, Oregon, USA and has provided steady financial support and guidance for the HEC program for the past 10 years. That support and partnership will continue during the Earthship build and long after to create a permanent home for the young ladies of the HEC and a beautiful sustainable building that will be a model for the girls and many others for years to come.



Patron Charitable Initiatives

Patron Capital Partners has evolved into one of the leading opportunistic real estate managers in Europe. Patron School Initiative integrated part of Patron Charitable Initiatives, that supports educators and funds projects to improve education with refurbishment and construction of new schools, harnessing their multiplier effects in key areas of society. The projects that particularly helped in the areas of education and regeneration, breaking down barriers and promoting a real understanding of the issues being faced. Patron Capital is a long-term supporter of schools and education projects around the world. The work in Nepal has impacted 30+ villages and 3,500+ school children. Overall impact including UK 5,000+ teachers and 520,000+ school children.



Donate here: www.cuoreattivo.org

Volunteer and join us here: www.biotectureplanetearth.com/nepal